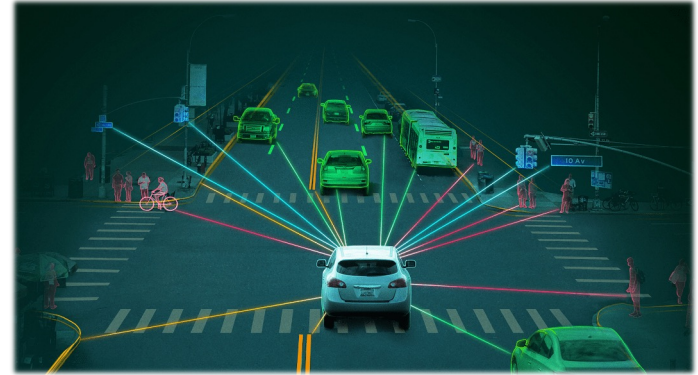


# Data-driven Vehicle Behavior Prediction

✉ theodor.westny@liu.se

## Opportunities:

- *Behavior*: Cooperativeness/Attitude, likeliness to yield.
- *Intention*: Lane-change, highway merging, turn-direction in intersection, exit roundabout.
- *Motion*: future position or trajectory.



## Methods:

- *Learning*: Transformers, Graph neural nets, Neural ODEs, Conditional VAEs, Mixture Density Networks, Gaussian Processes, ...
- *Sensor fusion*: Kalman filters, particle filters, motion models, ...

